

Evaluation and Determination of Lactase Activity on Various Lactic Acid Bacteria isolated from Kefir by Using HPLC

[†]Dana Jeong¹, [†]Dong-Hyeon Kim¹, [†]Jung-Whan Chon^{1,2},
[†]Hyunsook Kim³, [†]Soo-Kyung Lee^{1,4}, Hong-Seok Kim¹,
^{*}Kwang-Young Song¹, Il-Byung Kang¹, Young-Ji Kim¹,
Jin-Hyeong Park¹, Ho-Seok Chang¹ and [†]Kun-Ho Seo¹

¹Center for One Health, College of Veterinary Medicine, Konkuk University, Seoul, Korea

²National Center for Toxicological Research, US Food and Drug Administration, Jefferson, AR, USA

³Dept. of Food & Nutrition, College of Human Ecology, Hanyang University, Seoul, Korea

⁴Foreign Animal Disease Division, Dept. of Animal and Plant Health Research, Animal and Plant Quarantine Agency, Gyeongsangbukdo, Korea

Abstract

Kefir is a probiotic food. Probiotics have shown to be beneficial to health, and are currently of great interest to the food industry. Hence, this study was carried out to evaluate the lactase activity of kefir-isolated lactic acid bacteria. Three strains, *Lactobacillus kefir* DH5 isolated from the kefir grains and *Bifidobacterium animalis* subsp. *Lactis* and *Bifidobacteria longum* 720, commercial probiotic LAB, were fermented in 10% reconstituted nonfat dry milk suspensions and incubated at 37°C for 48 h, and then analyzed for various saccharides by HPLC. The results showed that changes in the concentrations of lactose and galactose were significantly decreased and increased, respectively ($p < 0.05$), but all 3 probiotic strains tested in this study showed no increase in glucose concentration during 48 h of incubation. Both DH5 and BL720 showed high lactase activities ($p < 0.05$), whereas BLC exhibited the lowest activity. Additionally, all three lactic acid bacteria showed high tagatose, but did not show high xylose and sedoheptulose. Finally, DH5, a kefir-isolated LAB, may have similar characteristics and properties to typical *Bifidobacterium* spp. and showed higher lactase activity than commercial *Bifidobacterium* spp.

Keywords

kefir, probiotic, lactase, high-performance liquid chromatography

Introduction

Probiotics are microorganisms that are believed to provide health benefits when consumed (Kim *et al.*, 2015; O'Brien *et al.*, 2016). A probiotic is a live microbial food supplement used in fermented dairy foods and cheeses that beneficially affect the host animal by improving the microbial balance (Samah *et al.*, 2016). In general, the probiotic could improve colonization resistance, immunomodulation and nutritional contribution of the normal gastrointestinal microbiota when ingested by human or animal hosts (Khoder *et al.*, 2016). Furthermore, potential health benefits of probiotics claimed in the literature are substantial including inhibition of carcinogenesis and anticholesteremic effects (Rababah *et al.*, 2015; Del Carmen *et al.*, 2016). Namely, the improvement of digestibility

Received: October 18, 2016

Revised: October 30, 2016

Accepted: November 1, 2016

[†]These authors contributed equally to this study.

^{*}Corresponding author :

Kwang-Young Song, Center for One Health, College of Veterinary Medicine, Konkuk University, Seoul, Korea.

Tel : +82-2-450-4121,

Fax : +82-2-3436-4128,

E-mail : drkysong@gmail.com

This is an Open Access article distributed under the terms of the Creative Commons Attribution Non-Commercial License (<http://creativecommons.org/licenses/by-nc/3.0>) which permits unrestricted non-commercial use, distribution, and reproduction in any medium, provided the original work is properly cited.

is generally attributed to the presence of the enzyme lactase that is associated with kefir-isolated lactic acid bacteria and other probiotic organisms (Kim *et al.*, 2015; Zavala *et al.*, 2016). Recently, kefir is actually considered an example of probiotic mixture of bacteria and yeasts (Guzel-Seydim *et al.*, 2011; Kim *et al.*, 2015). Probiotics as lactic acid bacteria generally showed higher the lactase activities (Kim *et al.*, 2015). Lactase was a part of the β -galactosidase family of enzymes and was a glycoside hydrolase involved in the hydrolysis of the disaccharide lactose into constituent galactose and glucose monomers (Kim *et al.*, 2015). Until now, the lactase activity of *Bifidobacterium bifium*, *Lactobacillus acidophilus*, and a mixed yoghurt culture of *Streptococcus thermophilus* and *L. delbrueckii* ssp. *bulgaricus* was observed by several previous studies (Yoon *et al.*, 2000; Shin *et al.*, 2012; Kim *et al.*, 2015). However, there was no report about the lactase activity of kefir-isolated LAB until now.

Hence, the objective of this study were to examine variability of lactase activities of kefir-isolated lactic acid bacteria strains and also to evaluate methods for determining potential activities of the enzyme associated with the culture microorganisms.

Material and Methods

1. Bacterial strains used in this study

Lactobacillus kefir DH5 was isolated from the kefir grains. *Bifidobacterium animalis* subsp. *lactis* and *Bifidobacterium longum* 720 were purchased from Sacco[®]-LyofastBLC1 (Sacco, Cadorago, Italy) and Culture Systems, Inc. (Mishawaka, IN, USA), respectively (Table 1). Three strains of lactic acid bacteria were grown in MRS broth (Oxoid, Basingstoke, Hampshire, UK) at 25°C for 48 h.

2. Preparation of culture suspension

Suspensions (100 mL, each) of reconstituted 10% nonfat dry milk were heat-treated at 83°C for 30 min in a water bath and cooled to 40°C at ambient temperature. Based on preliminary study (Kim *et al.*, 2015), the suspensions were inoculated with approximately 10⁸ CFU/mL at 1~2% level (wt/vol). The inoculated suspensions were fermented in a 38°C water bath for active enzyme production by the cultures. All suspensions were prepared in duplicates for each culture.

3. Reagents and materials

The reference standards of lactose, glucose, galactose, and fructose (purity \geq 99.0%, for HPLC) were purchased from Sigma- Aldrich (St. Louis, MO, USA). Deionized water was purified by a Milli-Qsystem (Milipore Corp., Bedford, MA, USA) and 1N sulfuric acid was from Fischer Scientific (Piscataway, NJ, USA) and diluted with deionized water for use. All solvents were HPLC-grade and were used without further purification. A set of standard solutions and quality control (QC) solutions for various sugar were prepared by successive dilution of the stock solutions (1 mg/mL for each standard samples) with purified deionized water. All solutions were stored at -80°C until used in analyses. A set of 3 lactic acid bacteria were selected to compare its lactase activity during 48 hours. One strain was isolated from kefir milk and 2 strains were food grade commercial product used to fermented products as starter culture. More details about 3 strains were described on Table 1.

4. High-performance liquid chromatography analysis of mono-, di-, and oligosaccharide fractions

According to the methods provided by Kim *et al.* (2015), sample analysis was performed using Agilent 1260 HPLC

Table 1. The list of strains used in this study for evaluating lactase activity

Strain name	Strain	Source
DH5	<i>Lactobacillus kefir</i>	Kefir milk
BLC	<i>Bifidobacterium animalis</i> subsp. <i>lactis</i>	Sacco [®] -Lyofast BLC1 (Sacco, Cadorago, Italy)
BL720	<i>Bifidobacterium longum</i>	Culture Systems, Inc. (Mishawaka, IN, USA)

Table 2. The instrumental conditions for analyzing lactase activity by HPLC

Items	Conditions
Instrument	Agilent 1200 HPLC ChemStation™ (Agilent, USA)
Column	Guard column (4.6 mm ID×12.5 mm, Agilent, USA) Hi-Plex Ca Carbohydrate Analysis column (6.5 mm×300 mm)
Data program	ChemStation™ Data Browser Software Module (Agilent, USA)
Detector	Refractive Index Detector (RID, Agilent, USA)
Mobile phase	0.013 N H ₂ SO ₄
Flow rate	0.8 mL/min
Column temp.	65°C
Injection volume	20 µL

ChemStation™ (Agilent, Palo Alto, USA) equipped with UV Detector and RI detector (Table 2). The separation of sugars was performed on a Hi-Plex Ca column (6.5 mm ×300 mm) using an automatic injector (G1367E, 1260 Hip-ALS, Agilent Technologies 1290 Infinity) and Guard Column (4.6 mm ID ×12.5 mm, Agilent, USA). Mobile

Table 3. The list of bacteria and yeast belong to Kefir grains

Bacteria strains common to kefir grains	Yeast strains common to kefir grains
<i>Lactobacillus acidophilus</i>	
<i>Lactobacillus brevis</i>	
<i>Lactobacillus casei</i>	
<i>Lactobacillus delbrueckii</i> subsp. <i>bulgaricus</i>	
<i>Lactobacillus delbrueckii</i> subsp. <i>delbrueckii</i>	
<i>Lactobacillus delbrueckii</i> subsp. <i>lactis</i>	
<i>Lactobacillus helveticus</i>	
<i>Lactobacillus kefir</i> subsp. <i>kefir</i>	
<i>Lactobacillus paracasei</i> subsp. <i>paracasei</i>	
<i>Lactobacillus plantarum</i>	
<i>Lactobacillus rhamnosus</i>	
<i>Lactobacillus sake</i>	
<i>Lactococcus lactis</i> subsp. <i>cremoris</i>	
<i>Lactococcus lactis</i> subsp. <i>lactis</i>	
<i>Lactococcus lactis</i>	
<i>Leuconostoc mesenteroides</i> subsp. <i>cremoris</i>	
<i>Leuconostoc mesenteroides</i> subsp. <i>dextranicum</i>	
<i>Leuconostoc mesenteroides</i> subsp. <i>mesenteroides</i>	
<i>Pseudomonas</i>	
<i>Pseudomonas fluorescens</i>	
<i>Pseudomonas putida</i>	
<i>Streptococcus thermophilus</i>	
	<i>Candida humilis</i>
	<i>Kazachstania unispora</i>
	<i>Kazachstania exigua</i>
	<i>Kluyveromyces siamensis</i>
	<i>Kluyveromyces lactis</i>
	<i>Kluyveromyces marxianus</i>
	<i>Saccharomyces cerevisiae</i>
	<i>Saccharomyces martiniae</i>
	<i>Saccharomyces unisporus</i>

Resource from Guzel-Seydim *et al.* (2011), laneva *et al.* (2012), and Ahmed *et al.* (2013)

phase was 0.013M H₂SO₄ at a flow rate of 0.8 mL/min. The column and auto-sampler tray were maintained at 65°C and 4°C, respectively. The analytical run time was 20 min.

5. Statistical analysis

Statistical analysis was carried out to compare enzyme activities in suspensions of different culture strains using SPSS version 18.0 (SPSS Inc., Chicago, IL, USA). The concentration of lactose, glucose and galactose were computed for Least-Squares means using SPSS GLM procedures, and mean concentrations were tested for significance ($p < 0.05$) using Duncans multiple range test. The experiment was duplicated.

Results and Discussion

Kefiris a fermented milk drink made with kefir “grains” (a yeast/bacterial fermentation starter) and has its origins in the north Caucasus Mountains (laneva *et al.*, 2012; Rahimzadeh *et al.*, 2012). Kefir grains are a combination of live

bacteria and yeasts that exist in a symbiotic matrix on a surface of a complex polysaccharide with a casein core (Prado *et al.*, 2016). However, the make-up of kefir grains could vary depending on the culturing location and culturing conditions (Guzel-Seydim *et al.*, 2011). The list of bacteria and yeast strains are Table 3.

Hence, among bacteria strains belong to kefir grains, kefir-isolated lactic acid bacteria should be firstly screened or evaluated by the lactase activity using HPLC, and then the selected probiotic candidate strain (s) of kefir-isolated LAB could be applied for various milk-based fermented foods with higher functional properties of probiotics, either alone or combined with other probiotics. Furthermore, among yeast strains belong to kefir grains, yeast also should be monitored so as to improve the lactase activity.

1. The change of di- and mono-saccharides during fermentation

The initial fermentation of the culture suspensions resulted in considerable differences of lactose, glucose, and galactose. During the fermentation, the culture organisms not only fermented lactose but also converted it to glucose and galactose (Yoon *et al.*, 2000; Kim *et al.*, 2015). This is reflected on the initial concentration of lactose, glucose, and galactose in samples. Fig. 1 showed the typical high performance liquid chromatography chromatogram of 1% standard solution.

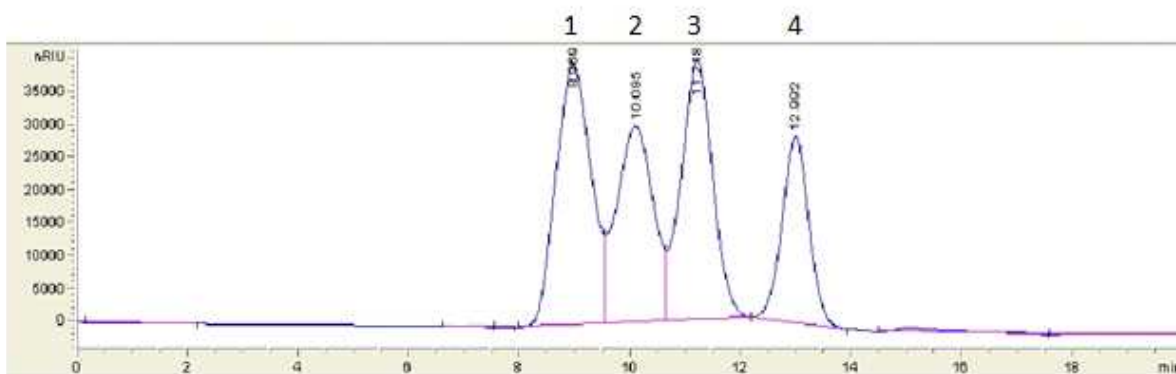


Fig. 1. The typical high performance liquid chromatography chromatogram of 1% standard solution. Agilent™ Hi-Plex Ca Carbohydrate Analysis column (6.5 mm×300 mm): Flow rate, 0.8 mL/min; Mobile phase, 0.013 N H₂SO₄; RI detector: 1. Lactose, 2. Glucose, 3. Galactose, and 4. Fructose.

2. The lactase activities of lactic acid bacteria during fermentation

The concentration of lactose in the samples decreased steadily, and the greatest reduction of lactose was observed with the BL720, followed by DH5, and BLC cultures (Fig. 2). Also, the concentration of galactose showed changes but, that of glucose showed little changes during 48 hours of incubation (Data not shown).

Based in this study, the concentration of lactose was decreased from 27% (BLC) to 36% (DH5 and BL720) ($p < 0.05$) (Fig. 2), and the concentration of galactose was increased about 200% (DH5, BL720, and BLC) ($p < 0.05$) (data not shown). However, The DH5, BL720, and BLC cultures test in this study showed no increase in glucose

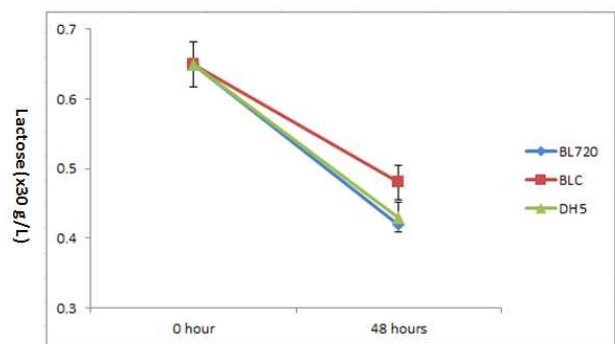


Fig. 2. The reduction of lactose in BL720, DH5, and BLC during 48 hours of incubation at 37°C.

concentration during 48 hours of incubation (Data not shown).

In general, the concentration of glucose and galactose increased slightly but steadily during the incubation as the lactose content decreased (Liu *et al.*, 2011; Shin *et al.*, 2012; Kim *et al.*, 2015). According to several previous researches, the largest increase in glucose and galactose was observed with *Bifidobacterium longum* among *Bifidobacterium* spp. tested (Yoon *et al.*, 2000; Kim *et al.*, 2015).

Even though sonication or antibiotic are not treated toward all 3 probiotic strains used in this study, DH5 as kefir-isolated lactic acid bacteria showed the greatest reduction of lactose and the largest increase of galactose. This study revealed that the lactase activity of DH5 showed the similar to that of *Bifidobacterium* spp. which was recognized as the highest activity of lactase compared to other lactic acid bacteria. Hence, for improving the usability of kefir-isolated LAB, it should be focused on screening and selecting the kefir-isolated LAB with high levels of both intra- and extra- cellular lactase using by sonication and antibiotic treatment. If above mentioned conditions are met, kefir-isolated LAB will be important with regard to minimizing the lactose mal-digestion problem.

3. The formation of oligo- and mono-saccharides during fermentation

The formations of different various saccharides were observed in the culture strains during 48 hours incubation. The BLC culture showed the peak of oligosaccharide, tagatose and unknown peak, and the BL720 culture exhibited the peak of tagatose and unknown peak without the peak of oligosaccharide (Data not shown). However, the BLC culture exhibited the largest number of monosaccharides (tagatose and several unknown). This result showed the similar patterns to previous study (Yoon *et al.*, 2000; Shin *et al.*, 2012; Kim *et al.*, 2015). Also, there was no detection on the peak of xylose and sedoheptulose at all 3 lactic acid bacteria used in this study.

In general, the formation of oligosaccharides is a well known phenomenon during hydrolysis of lactose by lactase

(Shin *et al.*, 2012; Kim *et al.*, 2015). The enzyme is known to take galactosyl moieties from lactose molecules and transfer them forming new oligosaccharides (Yoon *et al.*, 2000; Liu *et al.*, 2011; Gobinath and Prapulla, 2014; Kim *et al.*, 2015). Especially, it is interesting that less oligosaccharides and more monosaccharides were detected in DH5 as kefir- isolated lactic acid bacteria. Since the Hi-Plex Ca Carbohydrate Analysis column used in this study was 8% crosslinked resin, saccharides should had been eluted in decreasing order of molecular sizes (Yoon *et al.*, 2000; Kim *et al.*, 2015). Hence, those compounds eluted earlier than lactose are most likely oligosaccharides having di- or tri-saccharide units and others saccharides present included xylose, sedoheptulose, tagatose, and so on (Splechtna *et al.*, 2006; Shin *et al.*, 2012; Kim *et al.*, 2015).

Also, based on this study, all 3 lactic acid bacteria showed the peak of tagatose. The origin of tagatose seemed to be a byproduct of the metabolism of galactose to pyruvate by the BBB culture organisms (Pidoux *et al.*, 1990; Yoon *et al.*, 2000; Kim *et al.*, 2015). Hence, DH5 as kefir-isolated LAB maybe have the similar characteristic and properties of *Bifidobacterium* spp. such as BL720 and BLC cultures. Furthermore, a seven- carbon ketose as xylose and sedoheptulose could be produced in the metabolic pathway of *Bifidobacterium* spp. (Frengova *et al.*, 2000; Shin *et al.*, 2012; Kim *et al.*, 2015). But all 3 lactic acid bacteria used in this study did not shown any peak of xylose and sedoheptulose. Then, the further studies are needed to assess current outcome.

In summary, total 3 strains of lactic acid bacteria which were 1 of kefir-isolated and 2 of commercial exhibited a considerable difference in their lactase activities. Incubating the culture suspensions at 37°C was sufficient to detect significant changes in concentration of lactose, glucose or galactose by HPLC. Also further study is needed that whether sonication or antibiotic treatment could be used for differentiating intra- and extracellular lactase activities associated with kefir- isolated LAB cultures.

Acknowledgement

This work was supported by the National Research Foundation of Korea (NRF) grant funded by the Korea government (MSIP) (No. 2015R1A2A2A01005017).

Disclaimer: The views expressed herein do not necessarily reflect those of the US Food and Drug Administration or the US Department of Health and Human Services.

References

- Ahmed, Z., Wang, Y., Ahmad, A., Khan, S. T., Nisa, M., Ahmad, H. and Afreen, A. 2013. Kefir and health: A contemporary perspective. *Crit. Rev. Food Sci. Nutr.* 53:422-434.
- Del Carmen, S., de Moreno de LeBlanc, A. and LeBlanc, J. G. 2016. Development of a potential probiotic yoghurt using selected anti-inflammatory lactic acid bacteria for prevention of colitis and carcinogenesis in mice. *J. Appl. Microbiol.* doi:10.1111/jam.13213.
- Frengova, G. I., Simova, E. D., Beshkova, D. M. and Simov, Z. I. 2000. Production and monomer composition of exopolysaccharides by yogurt starter cultures. *Can. J. Microbiol.* 46:1123-1127.
- Gamba, R. R., De Antoni, G. and Peláez, A. L. 2016. Whey permeate fermented with kefir grains shows antifungal effect against *Fusarium graminearum*. *J. Dairy Res.* 83:249-255.
- Gobinath, D. and Prapulla, S. G. 2014. Permeabilized probiotic *Lactobacillus plantarum* as a source of β -galactosidase for the synthesis of prebiotic galactooligosaccharides. *Biotechnol. Lett.* 36:153-157.
- Guzel-Seydim, Z., Kok-Tas, T. and Greene, A. K. 2011. Review: Functional properties of kefir. *Crit. Rev. Food Sci.* 51:261-268.
- Khoder, G., Al-Menhali, A. A., Al-Yassir, F. and Karam, S. M. 2016. Potential role of probiotics in the management of gastric ulcer. *Exp. Ther. Med.* 12:3-17.
- Kim, D. H., Chon, J. W., Kim, H., Kim, H. S., Choi, D., Hwang, D. G. and Seo, K. H. 2015. Detection and enumeration of lactic acid bacteria, acetic acid bacteria and yeast in kefir grain and milk using quantitative real-time PCR. *J. Food Safety* 35:102-107.
- Kim, D. H., Hwang, D. G., Chon, J. W., Kim, H., Kim, H. S., Song, K. Y., Yim, J. H., Kim, Y. J., Kang, I. B., Lee, S. K. and Seo, K. H. 2015. Simultaneous determination of carbohydrates and organic acids in various cultured dairy foods by high-performance liquid chromatography: A preliminary study. *J. Milk Sci. Biotechnol.* 33:263-269.
- Ianeva, O. D., Sichkar', S. V., Voronina, A. A. and Podgorskiĭ, V. S. 2012. Selection of thermophilic lactose-fermenting yeast strains. *Mikrobiol. Z.* 74:65-70.
- Liu, G. X., Kong, J., Lu, W. W., Kong, W. T., Tian, H., Tian, X. Y. and Huo, G. C. 2011. β -Galactosidase with transgalactosylation activity from *Lactobacillus fermentum* K4. *J. Dairy Sci.* 94:5811-5820.
- O'Brien, K. V., Aryana, K. J., Prinyawiwatkul, W., Ordonez, K. M. and Boeneke, C. A. 2016. Short communication: The effects of frozen storage on the survival of probiotic microorganisms found in traditionally and commercially manufactured kefir. *J. Dairy Sci.* doi: 10.3168/jds.2015-10284.
- Pidoux, M., Marshall, V. M., Zanoni, P. and Brooker, B. 1990. *Lactobacilli* isolated from sugary kefir grains capable of polysaccharide production and minicell formation. *J. Appl. Bacteriol.* 69:311-320.
- Prado, M. R., Boller, C., Zibetti, R. G., de Souza, D., Pedroso, L. L. and Soccol, C. R. 2016. Anti-inflammatory and angiogenic activity of polysaccharide extract obtained from Tibetan kefir. *Microvasc. Res.* 108:29-33.
- Rababah, T. M., Awaisheh, S. S., Al-Tamimi, H. J. and Brewer, S. 2015. The hypocholesterolemic and hormone modulation effects of isoflavones alone or co-fermented with probiotic bacteria in hyper cholesterolemic rats model. *Int. J. Food Sci. Nutr.* 66:546-552.
- Rahimzadeh, G., Bahar, M. A. and Mozaffari, N. A. 2012. Antimicrobial activity kefir on different time fermentation. *Iran J. Med. Microbiol.* 5:35-41.
- Samah, S., Ramasamy, K., Lim, S. M. and Neoh, C. F. 2016. Probiotics for the management of type 2 diabetes mellitus: A systematic review and meta-analysis.

- Diabetes Res. Clin. Pract. 18:172-182.
18. Shin, S. M., Song, K. Y., Seo, K. H. and Yoon, Y. C. 2012. Study on the quality of yoghurt made from soymilk during storage. J. Korean Dairy Technol. and Sci. 30:83-92.
 19. Splechna, B., Nguyen, T. H., Steinböck, M., Kulbe, K. D., Lorenz, W. and Haltrich, D. 2006. Production of prebiotic galacto-oligosaccharides from lactose using beta-galactosidases from *Lactobacillus reuteri*. J. Agric. Food Chem. 54: 4999-5006.
 20. Yoon, Y. C., Song, K. Y., Jeong, D. K. and Jeon, I. J. 2000. Assessment of potential β -galactosidase activities of Bifidobacteria cultures by high performance liquid chromatography. Food Sci. Biotechnol. 9:43-47.
 21. Yu, J., Wang, H. M., Zha, M. S., Qing, Y. T., Bai, N., Ren, Y., Xi, X. X. and Liu, W. J. 2015. Molecular identification and quantification of lactic acid bacteria in traditional fermented dairy foods of Russia. J. Dairy Sci. 98:5143-5154.
 22. Zavala, L., Golowczyc, M. A., van Hoorde, K., Medrano, M., Huys, G., Vandamme, P. and Abraham, A. G. 2016. Selected *Lactobacillus* strains isolated from sugary and milk kefir reduce *Salmonella* infection of epithelial cells *in vitro*. Benef. Microbes. 13:1-12.